



**Bullock, Bennett & Associates, LLC**

---

www.bbaengineering.com  
165 N. Lampasas St. • Bertram, Texas 78605 • (512) 355-9198

**CLOSURE PLAN - ADDENDUM NO. 2**

**Martin Lake Steam Electric Station – PDP-5  
Rusk County, Texas**

Submitted to:

**Luminant Generation Company LLC**

Submitted by:

**BULLOCK, BENNETT & ASSOCIATES, LLC**

165 N. Lampasas Street

Bertram, Texas 78605

(512) 355-9198

Texas Professional Engineering Firm No. 8542

Texas Geoscience Firm No. 50127

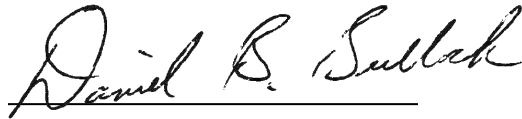
February 2024

BBA Project No. 24643-01-2024

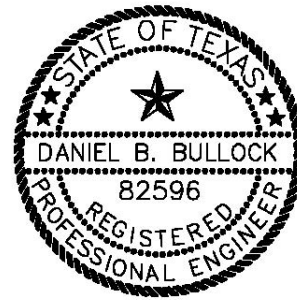
## PROFESSIONAL CERTIFICATION

Bullock, Bennett & Associates, LLC (BBA) is certifying this document to address the Texas Commission on Environmental Quality (TCEQ) Notice of Deficiency (NOD) No. 3 comments for the Martin Lake Steam Electric Station issued December 22, 2023. The information submitted is, to the best of my knowledge and belief, true, accurate, and complete.

I hereby certify that Addendum No.2 to the Closure Plan for the PDP-5 at the Martin Lake Steam Electric Station has been prepared in accordance with the requirements of 40 C.F.R. §257.102(b).



Daniel B. Bullock, P.E.  
Principal Engineer  
Bullock, Bennett & Associates, LLC



Date 2/26/2024

## **TABLE OF CONTENTS**

LIST OF APPENDICES .....	II
DOCUMENT REVISION RECORD .....	III
1.0 INTRODUCTION.....	1
2.0 PDP-5 CLOSURE PLAN REVISIONS .....	1
2.1 REVISIONS TO CLOSURE PLAN, PDP-5, FIGURE 4 – PROPOSED GRADING PLAN.....	1
3.0 REFERENCES.....	2

## **LIST OF APPENDICES**

APPENDIX A	CLOSURE PLAN, PDP-5, FIGURE 4
------------	-------------------------------

## DOCUMENT REVISION RECORD

Issue No.	Date	Details of Revisions
Revision 0	October 2016	Original Document
Addendum 1	December 2022	Revised configuration of final cap/cover system for PDP-5, added equivalency determination for proposed alternative final cover system, added cap settlement evaluation, added confirmation that cap slope stability will be modeled using site-specific geotechnical data during final closure design, removal of HELP Modeling from Closure Plan, revised closure schedule to state closure will be completed within five years and add estimated completion year, added section addressing the initiation of closure, and added section to address notification citations.
Addendum 2	February 2024	Revised Figure 4, Proposed Grading Plan, to add statement that final elevations will be provided during closure of the CCR unit; signed, sealed and dated by Texas Licensed P.E..

## 1.0 INTRODUCTION

On behalf of Luminant Generation Company LLC (Luminant), Bullock, Bennett & Associates, LLC (BBA) has prepared this Addendum No. 2 to the Closure Plan for Permanent Disposal Pond No. 5 (PDP-5) located at the Martin Lake Steam Electric Station (MLSES) in Rusk County, Texas (hereafter, the “Site”). Coal Combustion Residuals (CCR) including flue gas desulfurization (FGD) wastewater and bottom ash generated as part of MLSES operation are managed in the PDP-5. PDP-5 is regulated as Existing CCR Impoundments under 40 C.F.R. §257, Subpart D (the “CCR Rule”), which has been adopted by the State of Texas under 30 T.A.C. §352.

The original PDP-5 Closure Plan (PBW, 2016) and Closure Plan Addendum No. 1 (WSP Golder, 2022) was prepared in October 2016 and December 2022, respectively, in accordance with 40 C.F.R. §257.102(b) and placed in the MLSES operating record in accordance with 40 C.F.R. §257.105(h)(10). This Addendum No. 2 updates the Closure Plan to incorporate the changes described in Section 2.0.

## **2.0 PDP-5 CLOSURE PLAN REVISIONS**

The following revisions were made to the PDP-5 Closure Plan in Addendum 2.

### **2.1 REVISIONS TO CLOSURE PLAN, PDP-5, FIGURE 4 – PROPOSED GRADING PLAN**

PDP-5 Figure 4 was revised with the signature and seal of a Texas Licensed P.E. and dated accordingly. Additionally, a statement was added to the drawing stating that final elevations for the CCR unit would be provided during closure. The revised drawing can be found in Appendix A of this Addendum.

### **3.0 REFERENCES**

Pastor, Behling & Wheeler, LLC (PBW), 2016. CCR Closure Plan – Permanent Disposal Pond 5, Martin Lake Steam Electric Station. October.

WSP Golder, 2022. CCR Closure Plan Addendum No. 1 – Martin Lake Steam Electric Station – PDP-5. December.

**APPENDIX A**

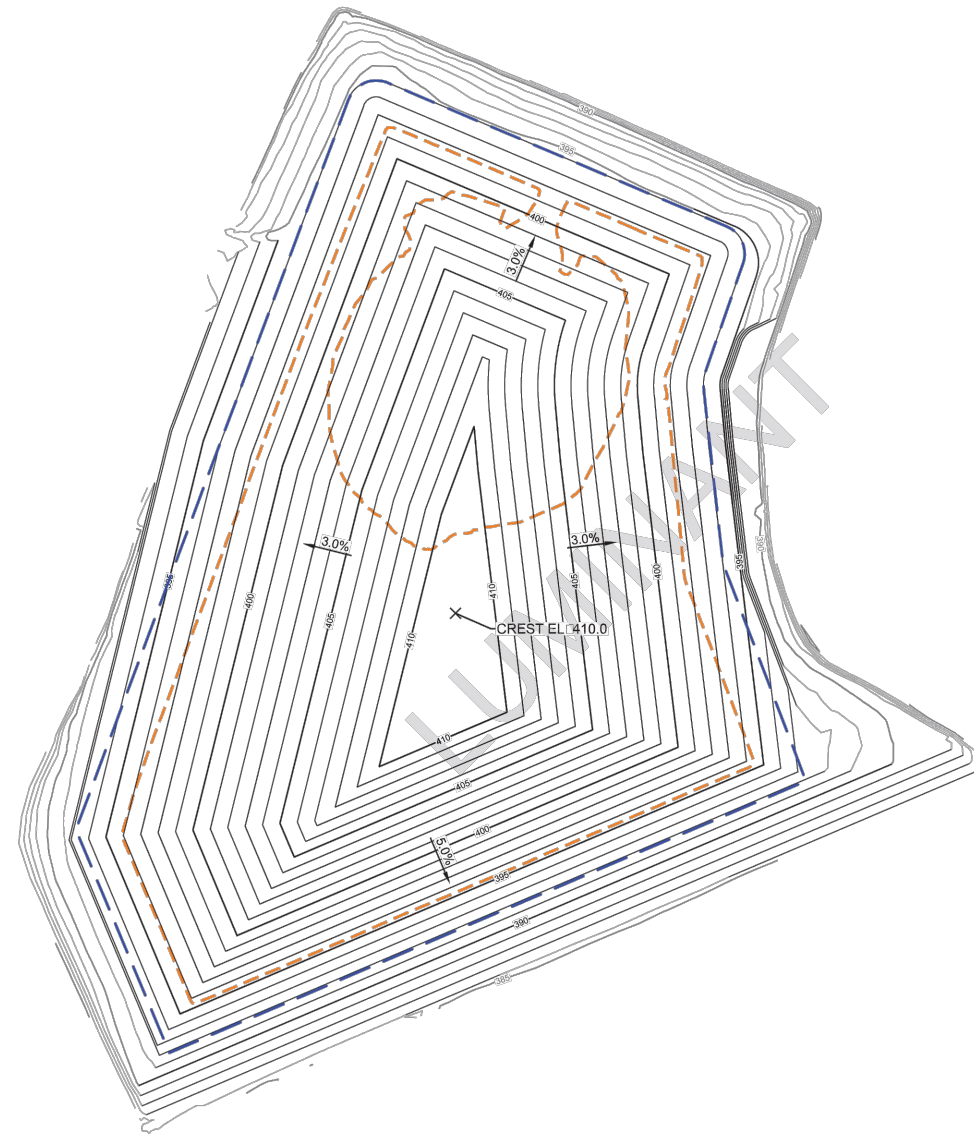
---

**Closure Plan, PDP-5, Figure 4**



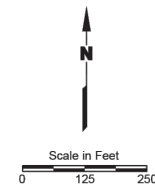
Plot Date: 02/08/24 - 4:17pm, Plotted by: Admin  
 Drawing Path: K:\clients\bba\Luminant\Lake Martin\246431, Drawing Name: C-ST-PL101.dwg

APPENDIX G-Revision 1 December 15, 2022



**EXPLANATION**

- Proposed Finished Grade Contour 1 ft Interval
- Proposed Finished Grade Contour 5 ft Interval
- - - Proposed Limits of CAP
- - - Estimated Limits of CCR (Elev. 400.5)



LUMINANT GENERATION COMPANY, LLC  
 MARTIN LAKE STEAM ELECTRIC STATION

Figure 4

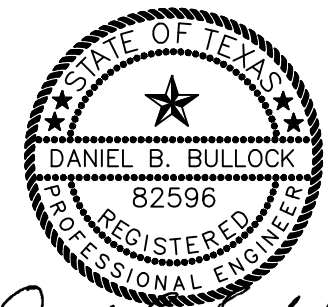
**PROPOSED GRADING PLAN**

PROJECT: 5196B	BY: AJD	REVISIONS
DATE: SEPT., 2016	CHECKED: BDT	

PASTOR, BEHLING & WHEELER, LLC  
 CONSULTING ENGINEERS AND SCIENTISTS

**NOTE:**

FINAL ELEVATIONS FOR THE UNIT  
 WILL BE PROVIDED AT CLOSURE.



*Daniel B. Bullock*  
 2-8-2024

**Luminant**  
 Martin Lake Steam Electric Station

Figure 4

**PROPOSED GRADING PLAN**

PROJECT: 24643	BY: RCAD-RR	DATE: FEB 2024	CHECKED: DBB
----------------	-------------	----------------	--------------

Bullock, Bennett & Associates, LLC  
 Engineering and Geoscience  
 Texas Registrations: Engineering F-8542, Geoscience 50127